

H

G

F

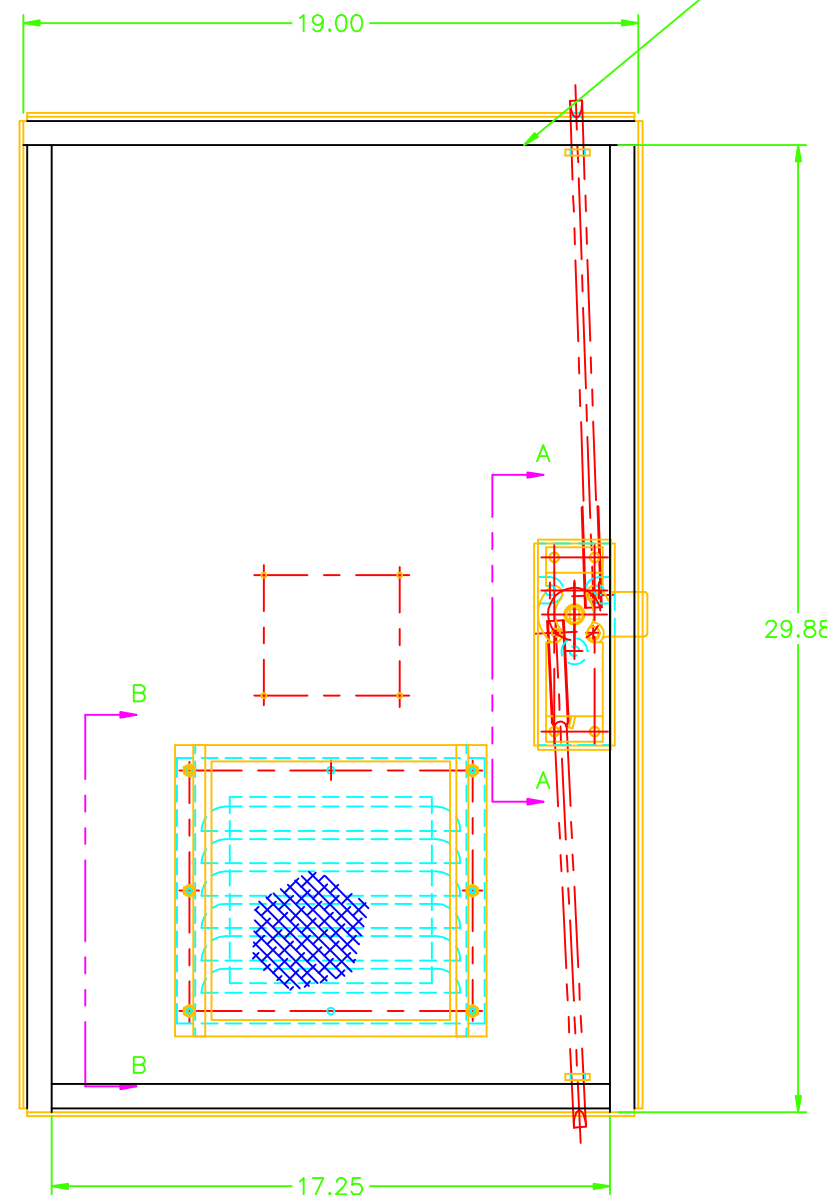
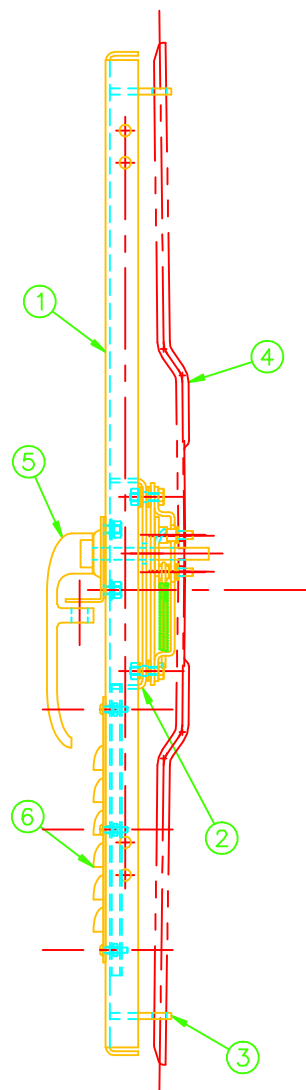
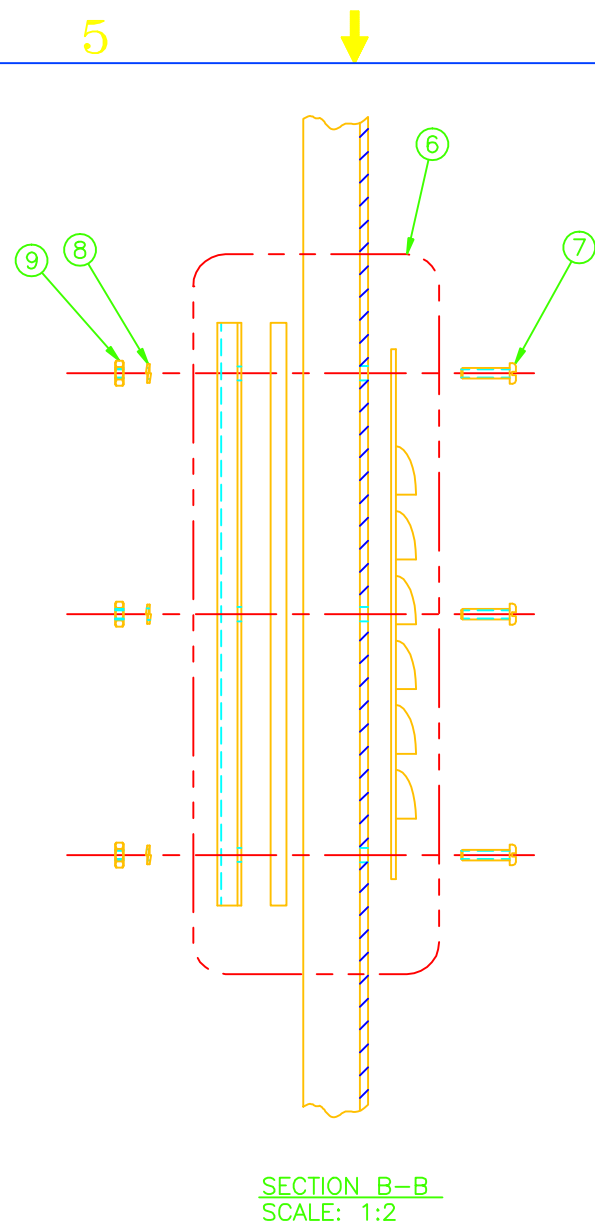
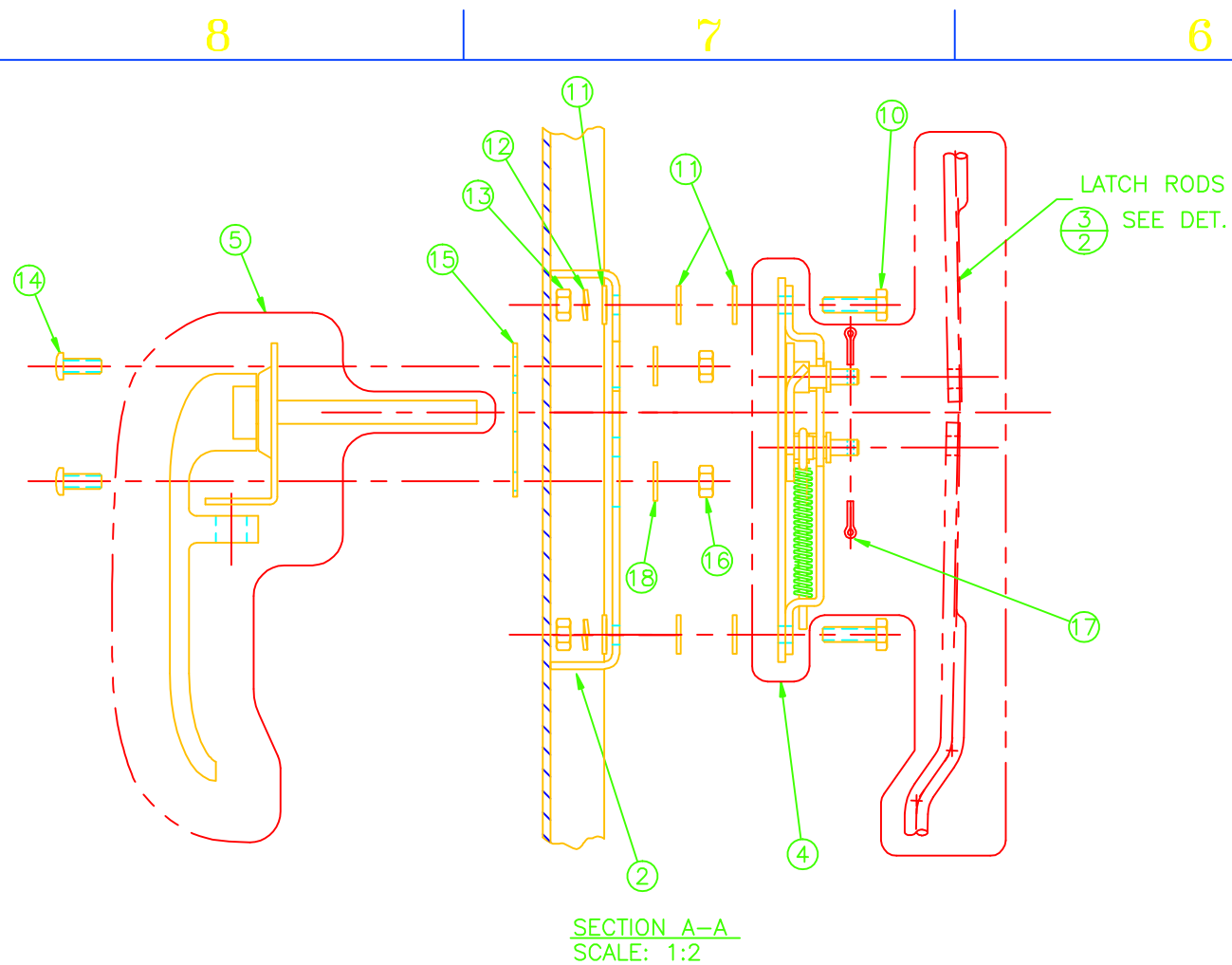
E

D

C

B

A



## NOTES:

1. THIS DRAWING IS DIMENSIONED IN ACCORDANCE WITH ANSI Y14.5M-1982
2. ALL INSIDE BENDING RADII SHALL BE 1/8", UNLESS OTHERWISE NOTED.
3. MATERIAL(S): (SEE PARTS LIST)
4. FINISH: REMOVE ALL BURRS AND SHARP EDGES
5. THIS DRAWING WAS MADE FROM HVB DRAWING#: 40-0103-XX

REVISIONS				
ZONE	REV	DESCRIPTION	DATE	APPROVED
	0	RELEASED PER ECO: 110042		
SHEET 2	1	ECO 110107: ADDED 4X 0.17 HOLES	11/4/11	C.R.
	2	ECO 120160: ADDED DOOR GASKET	12/4/12	C.R.

3	18	--	--	WASHER, FLAT #10, ZINC
2	17	--	--	COTTER PIN, #3/32" X 3/4", ZINC
3	16	--	--	NUT, SELF LOCKING, #10, ZINC
1	15	01-1064-00	0	GASKET, DOOR HANDLE
3	14	--	--	SCREW, PAN HEAD, #10 X 3/4", STAINLESS STEEL
4	13	--	--	NUT, 1/4", ZINC
4	12	--	--	WASHER, LOCK 1/4", ZINC
12	11	--	--	WASHER, FLAT 1/4", ZINC
4	10	--	--	BOLT, H/H 1/4-20UNC X 7/8", ZINC.
6	9	--	--	NUT, #8, STAINLESS STEEL
6	8	--	--	WASHER, LOCK, #8, STAINLESS STEEL
6	7	--	--	SCREW, PANHEAD, #8-32UNC X 3/4", STAINLESS STEEL
1	6	12-0002-XX	0	FILTER & LOUVER KIT
1	5	12-0302-XX	0	ASSY., HANDLE, DOOR ( SS OPT.)
1	4	12-0705-XX	0	ASSY., LATCH, (3 PT. OPT.)
2	3	--	--	GUIDE ALUMINUM, 0.75 X 0.125 THICK
1	2	--	--	SUPPORT, ALUMINUM 0.125" THICK
1	1	--	--	DOOR, ALUMINUM 0.125" THICK

QUANTITY / PART GROUP		ITEM #	PART #	REV.	DESCRIPTION, MATERIAL
GROUPS					
UNLESS OTHERWISE SPECIFIED DIMENSIONS ARE IN INCHES. DO NOT SCALE DRAWING.					
TOLERANCES:					
.XX ± 0.02					
.XXX ± 0.015					
ANG. ± 1°					
DRAWN BY: C. REIT		DATE: 5/4/11			
ENGRD BY:		DATE:			
		SCALE: 1:4		WEIGHT (LBS): N/A	
				CONT. ON SHIT. 2	
				SHT NO. 1	

CULLINAN

TITLE:

SIZE: PSCM NO. DWG. NO. REV.

D 40-0120-XX 2

SCALE: 1:4 WEIGHT (LBS): N/A CONT. ON SHIT. 2 SHT NO. 1

H

G

F

E

D

C

B

A